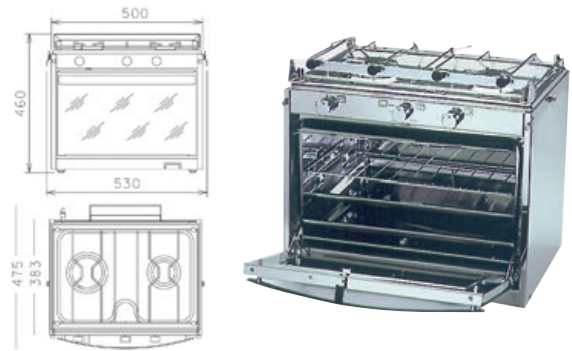


TECHIMPEX Marinertwo version

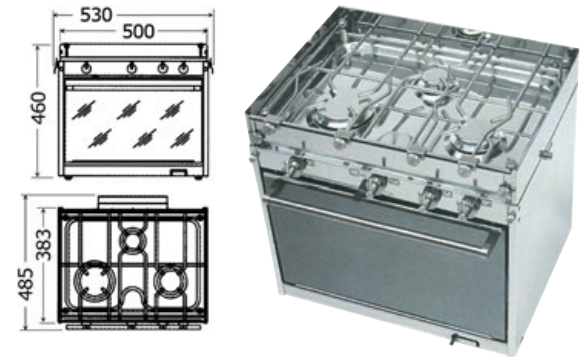
Features: **two high power burners**; pot holder bar; **adjustable** cardanic side support; safety thermocouples; **piezoelectric switching on system** powered by batteries; **mirror** front glass; grill; infinitesimal adjusting thermostat; large hob unit suitable for household pots; central over burner for better heat distribution; double removable oven tray, easy maintenance; large oven (900 cm²).

Code	No of burners	←→ overall mm		
		Width	depth	Height
50.370.00	2 of 1700/3000 W	500+30 for joint	475	460

**Gas kitchen "Topline" series TECHIMPEX**

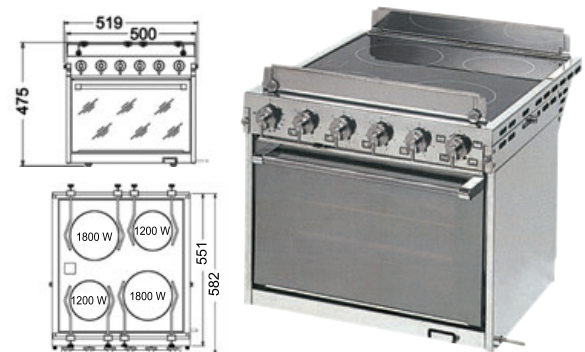
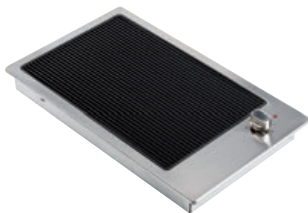
High quality product, professional performance;
features: very sturdy stainless steel structure; solid stainless steel pot holder, adjustable by length and height; removable side flame trap, easy maintenance; cardan joint with adjustable patented system; piezoelectric switching on system powered by AA batteries.

Code	Model	No of burners	Burners W	Oven + Grill	kg
50.380.00	TOPTHREE	3	3000/1700/1000	1700 + 1600	27

**TECHIMPEX Horizon electric kitchen with oven**

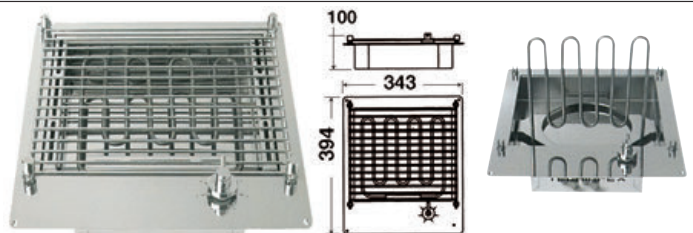
Furniture in **mirror-polished stainless steel**, with **ceramic glass top**, complete with gimbal joint and pot bars.
 Oven with grill and large drip tray.

Code	kg	No of burners	Oven W + Grill	V
50.390.04	25	4	1500	220

**Electric barbeques****Electric barbecue with ceramic glass top**

Stainless steel body. Automatic ignition. Residual color indicator. Connection cable with plug.
 Connection cable with plug.

Code	V	Power W	←→ outside mm
50.381.02	220-240	2500	510x300

Compact electric barbecue

Entirely made of stainless steel AISI 316, complete with removable juice collector, tilting electric resistance, removable grill, and fixed with special anti-vibration hooks.

Code	V	Power W	←→ outside mm
50.382.00	220	1500	394x343

Satin-finish stainless steel electric barbecue

Stainless steel surface. Black enamel cast iron grid. Overheat prevention circuit.

Code	V	Power W	←→ mm	
			external	recess
50.709.09	220	2400	510x305	482x282

