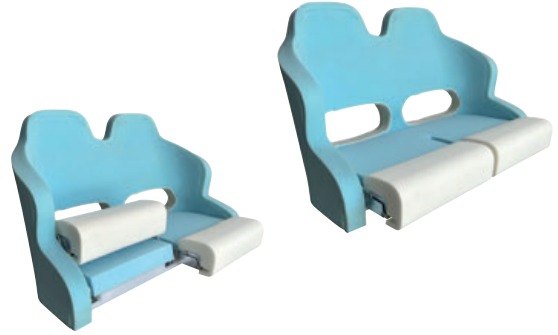
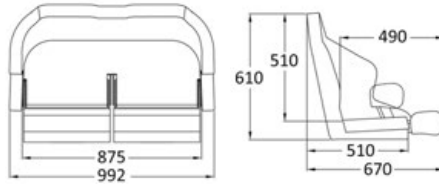


Double ergonomic padded seat with H99 flip-up bolster

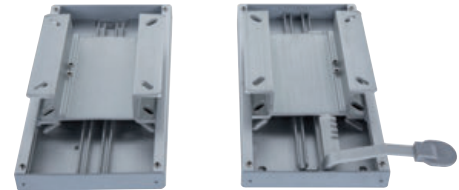
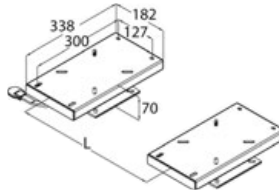
Rotary moulding plastic core. HD foam padding. Hole in the lumbar area.

Code	Type	OPTIONAL slide rail
48.410.40	With padding, ready to be covered	48.715.00

**Twin slides for double seat**

Code 48.715.00

Twin slides in anodized aluminium to fasten double seats 48.410.40. Only one of the slides is fitted with release lever for an easier sliding movement.

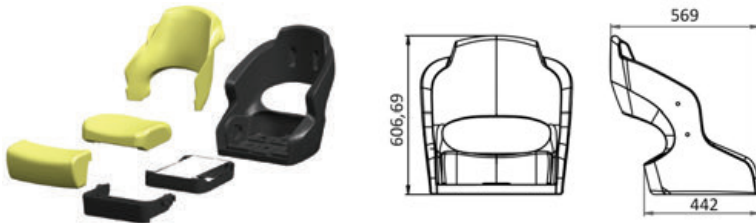
**ATTWOOD Aergo seat**

Code 48.408.30

Kit including plastic frame + flip-up bolster + padding ready to be upholstered. This seat features the SAS-Shock Absorbing System that absorbs the shocks without transferring impact to the boater.

SAS seat with shock absorbers that absorb wave impacts.

! Indicative picture. **The seat is supplied without upholstery.** Fabric or leather fabric at customer's choice **not included in the price.**

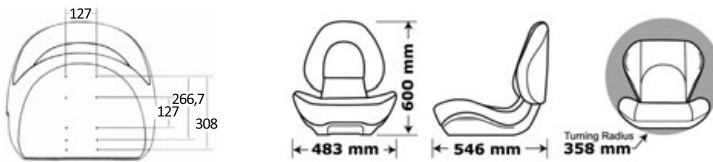


attwood®

**ATTWOOD Centric II ergonomic and folding seat**

Code 48.408.10

Seat + **foldable** backrest + 3 parts made of foam. Seat frame designed for proper water drainage. The seat is fitted with standard bushings for fastening to a pedestal. Supplied **without upholstery** (to be taken care of at the shipyard).



attwood®



▲ Demonstration photo, example of customization

**Fabric seat cover**

Made of polyester fabric and waterproof polyurethane coating.

Code	↔ Ax B x H cm	Colour	Material weight	For seat
48.688.01	45x55x53	grey	300 D	Single-seater
48.688.02	60x60x65	grey	300 D	Single-seater
48.688.03	53x90x89	grey	300 D	Two-seat



OSCULATI

