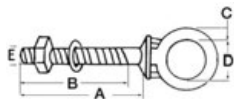




### Double eyebolt for dinghy stern mounting

Code	Material	Ø pin mm	Length mm	Ø round ring mm
39.170.91	SS	8	60	8
39.170.92	SS	10	80	10



### Eyebolts

Made of mirror polished **AISI 316 stainless steel** press-forged without welded parts; maximum sturdiness and reliability.

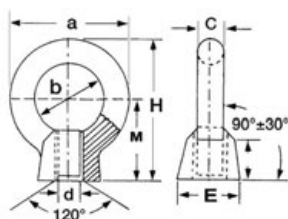
Code	E mm	A mm	B mm	C mm	D mm	ORDER BY BOX
39.181.01	6	40	34	5	12	10
39.181.02	6	60	54	5	12	10
39.181.04	8	100	90	6	14	10
39.181.05	10	100	88	8	16	10
39.181.06	12	120	105	10	18	10



### Eyebolts

Made of press-forged **AISI 316 stainless steel**, very sturdy and practical.

Code	Pin	Length subbase mm
39.182.01	6 MA	60
39.182.02	8 MA	80



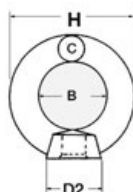
### Threaded eyebolts

Made of mirror-polished **AISI 316 stainless steel**, with thread.

Code	a mm	b mm	c mm	E mm	M mm	H mm	Thread d mm	9
39.306.06	26	16	5	13	13	28.3	M 6	45
39.306.08	32.6	20	6.3	16	17	33.3	M 8	80
39.306.10	41	25	8	20	21	41.5	M 10	150
39.306.12	50	30	10	25	26	51	M 12	220



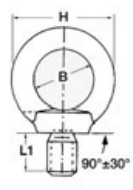
39.159.xx



39.159.xx



39.158.xx



39.158.xx

### Eyebolt

With cast AISI316 stainless steel eye.

Female	Male	Breaking load kg	Thread C mm	B mm	H mm	L mm	L1 mm	D2 mm	ORDER BY BOX
39.159.06	39.158.06	1300	M 6	16	28	41	13	17	10
39.159.08	39.158.08	1450	M 8	20	36	48	13	20	10
39.159.10	39.158.10	2000	M 10	25	45	62	17	25	10
39.159.12	39.158.12	2800	M 12	30	54	75	21	30	10
39.159.16	39.158.16	5850	M 16	35	63	90	27	35	10



### Swivel ring with pin

Made of **chromed brass**.

Code	Ø pin mm	Ring Ø mm
39.170.61	1/2	50

### Swivel ring with stainless steel pin



Made of **stainless steel**.

Code	Ø mm	Length underhead mm
39.170.62	10	55

### Swivelling ring



Made completely with **chromed bronze**.

Code	Ring Ø mm	Plate mm
39.170.70	35	40x30



### Ring with screws

Made of **chromed bronze**, very sturdy.

Code	mm
39.580.00	50x30x25