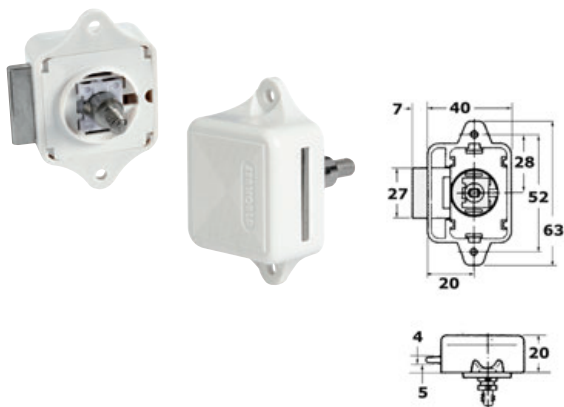


## Pushbutton spring locks

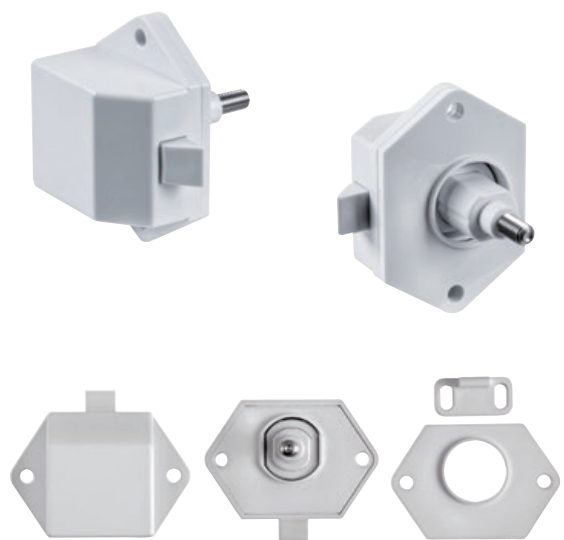
**OSCULATI**


### MEDIUM pushbutton spring lock

Push-pull system spring lock for hatches and doors. Fitted with 4 spacers + 1 seal. Nylon frame and stainless steel springs.

A1 = Round knob with spacer.  
 B = Rectangular knob.  
 B1 = Rectangular knob with Spacer.  
 C = Convex knob.  
 C1 = Convex knob with Spacer.

Code	Finish	For hatch thickness mm				
		A	A1	B1	C	C1
38.182.50	white	15/18	15/24	16/25	16/19	16/25

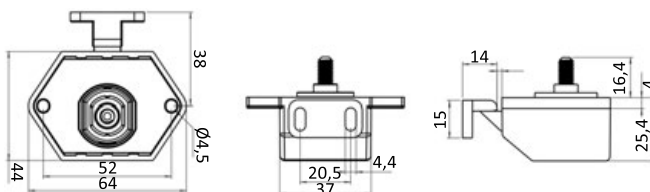


### SELF-LATCHING pushbutton spring lock

It makes the hatch close by **simply pushing it**. It works with both a recessed or projecting knob. Pull the knob to open the hatch. Nylon frame and stainless steel springs.

A1 = Round knob with spacer.  
 B = Rectangular knob.  
 B1 = Rectangular knob with Spacer.  
 C = Convex knob.  
 C1 = Convex knob with Spacer.

Code	Finish	For hatch thickness mm					
		A	A1	B	B1	C	C1
38.182.40	White	18/24	15/21	20/26	17/23	23/29	20/26


**OSCULATI**


### Knob + ring for spring locks 38.182.40/50/51/54

It comes with a spacer for use on 15/25-mm thick bulkheads.

Code	Type	Finish		Bore Ø mm
		Ring	Push button	
38.182.55*	Round S	Polished AISI316 SS	Polished AISI316 SS	25
38.182.60	Round	Chromed ABS	Chromed ABS	25
38.182.68	Round	Polished AISI316 SS	Satin AISI316 SS	25
38.182.70	Convex	Chromed ABS	Chromed ABS	25
38.182.78	Convex	Polished AISI316 SS	Polished AISI316 SS	25
38.182.80	Rectangular	Chromed ABS	Chromed ABS	25
38.182.88	Rectangular	Polished AISI316 SS	Polished AISI316 SS	25

\*S version: superior design and finish. Product made from a CNC-wrought bar.

