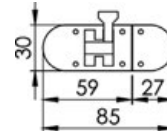


Latches

Sliding bolt lock

With special **vibration dampening** device.

Code	Material	mm
38.177.00	chromed brass	85x30

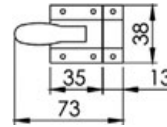


Snap-in locking

AISI 316

made of **mirror polished AISI 316 stainless steel**, fitted with opening handle, ideal for access gangway hatches, for peaks and fridges/iceboxes.

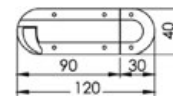
Code	Base mm
38.190.00	48x38



Spring doorstop made of chromed brass

Made of **chromed brass**, designed for rear gangway access hatches.

Code	mm
38.189.01	120x40x12h

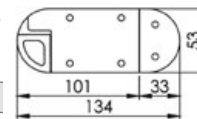


Stainless steel spring doorstops

AISI 316

Made of **polished AISI 316 stainless steel**, suitable for back gangplank access hatches.

Code	mm
38.189.03	134x53x16h



Blocking latches

made of **cast chromed brass**, very sturdy, brass piston.

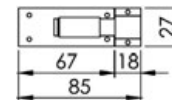
Code	Length mm
38.188.19	60
38.188.20	90



Sliding bolt lock

Made of **polished stainless steel**, fitted with anti-vibration system, made-ready for lock fitting.

Code	mm
38.214.00	85x27

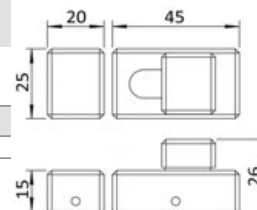


New

Latch lock

Made of mirror-polished AISI 316 stainless steel

Code	mm
38.189.06	66x25



New

Swivelling door stopper

Mirror-polished AISI316 stainless steel.

Prevents accidental opening.

When "**closed**", hidden screws.

Code	mm
38.145.10	58x15

