

Spider hinge

AISI 316

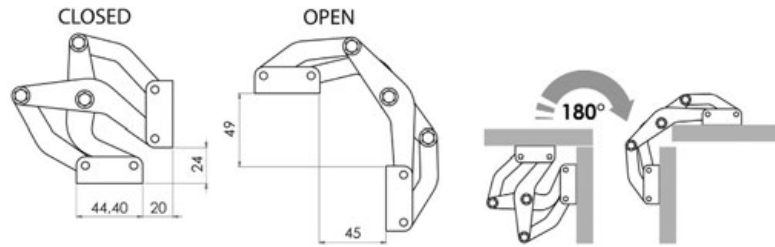
HEAVY DUTY

Code 38.527.01

Polished AISI316 stainless steel spider hinge.

Ideal for high-load hatches and pantograph opening systems up to 180°.

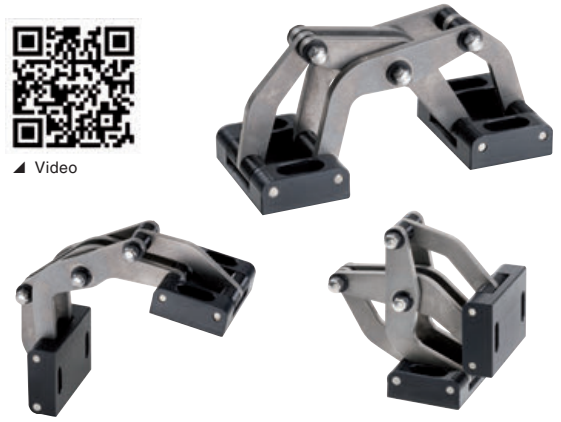
Its dynamic geometry keeps the hinge far from the seal of the door or hatch.



OSCULATI



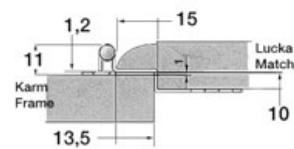
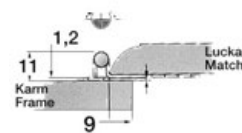
Video



Stainless steel hinge for doors

To lock the device it's advisable to use the stopper model 38.107.41 or similar.

Code	Version	mm	For doors
71.607.00	with overhanged part of 10 mm	57x44	71.607.20; 71.607.22; 71.607.24; 71.607.26
71.607.01	without overhang part	38x46	with flat stop

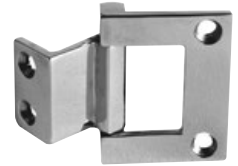
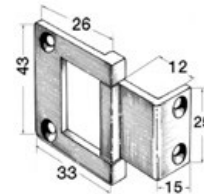


Eccentric hinges for long neck hatches

AISI 316

Code 38.924.00

Mirror-polished AISI316 stainless steel.



Brass hinges

Die-cast hinges

Made of **chromed brass**, designed for seats, hatches, doors etc. Very sturdy. 7-mm pin.

Code	mm
38.823.00	100x60

Hinges for ladders

Made of die-cast **chromed brass**, very sturdy.

Code	mm
38.825.00	145x20x15

Hinge for hatch

Made of **chromed brass**, designed for hatch opening.

Code	Length mm	Overhang mm
38.825.01	110	40



Hidden-screw hinge

Made of **chromed brass**, **no screws**, mounting from underneath with studs.

Code	mm	Wings	Opening
38.819.01	65x55	unequal, for fixing onto the rope on the stop	190°

