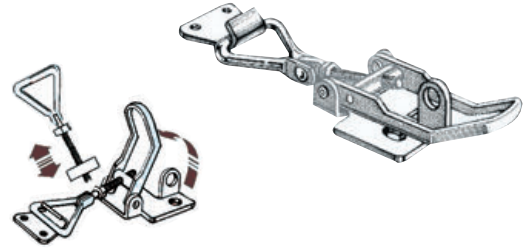


Adjustable stainless steel toggle fastener with padlock ring

Code	Length from mm	Connection mm	Padlock ring
38.904.10	from 75 to 90	18	Yes
38.904.12	from 100 to 125	25	no
38.904.11	from 123 to 137	29	Yes



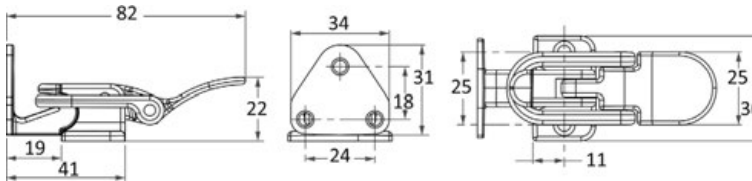
▲ 38.904.10



Lock for hoods and hatches, 90° hook type, lightweight and sturdy

Locking for trunks, hatches, portholes, 90° coupling, light weight and sturdy.

Code	Material	mm
38.107.70	Chromed brass	82x36x22



Lever latch with screw-covering hinge

Made of **chromed brass**, fitted with padlock holder, safety system with screws protected by the hinge.

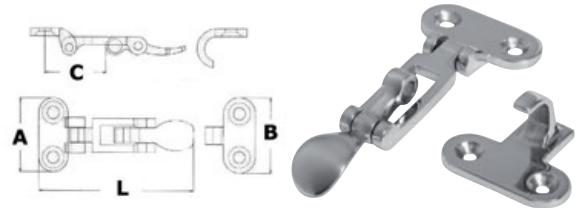
Code	mm
38.195.00	82x30



Lever closures

Locker latch with padlock ring

Code	Material	A mm	B mm	C mm	L mm
38.107.30	Chromed brass	50	50	42	110
38.107.31	AISI 316 stainless steel	48	48	42	110
38.107.32	AISI 316 stainless steel	37	38	30	75

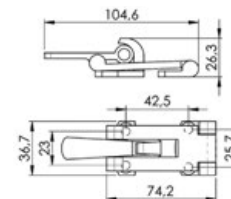


AISI316 lever fastener

AISI 316

Suitable for lockers. With eye for padlock

Code	Material
38.107.34	AISI316 stainless steel



Hidden vertical lock

Ideal to lock and lift benches and outside kitchen furniture.

Code	Pin	Plastic handle
38.109.00	Stainless steel	Black
38.109.01	Stainless steel	White

