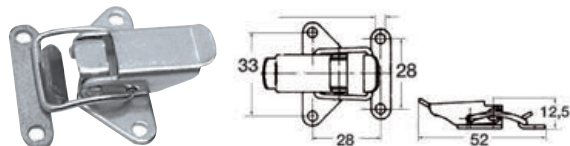
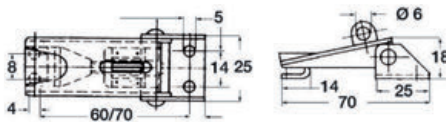




### Adjustable faired lever latch

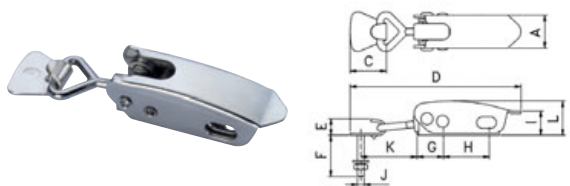
Made of stainless steel. Fitted with padlock ring.

Code	External fairing	Adjustable part	Overhang
38.241.00	70x25 mm	60x70 mm	18 mm



### Stainless steel toggle fastener suitable for trunks and hatches

Code	Length mm	Max pull kg	Max load kg
38.204.00	52	150	100



### Elastic level lock

Made of polished stainless steel is equipped with padlock holder and has a internal compensating spring avoid all vibrations

Code	Length mm	A mm	C mm	D mm	E mm	F mm	G mm	H mm	I mm	J mm	K mm	L mm
38.207.01	106	20	22	104	10	25	16	28	15	M4	34	21



### Peak toggle fastener fitted with padlock eye

Adjustable up to 12 mm, made of mirror polished stainless steel.

Code	Length mm	Width mm	Stroke mm
38.209.00	110 (total)	30	12

**OSCULATI**



### Toggle fastener SLIM series

**AISI 316**

Fitted with padlock eye; adjustable length; made of mirror polished AISI 316 stainless steel.

Code	Totallengthmm	Width mm	Overhang mm	Adjustable stroke
38.208.01	82	20	18.8	4.5
38.208.02	115	30	16.5	13



**OSCULATI**

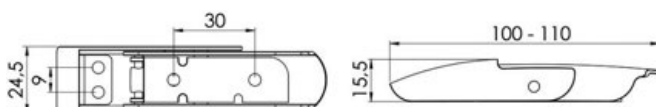


### RIVIERA lever latch

**AISI 316**

Code 38.212.00

Made of polished stainless steel. Ready for locking with a padlock.



**OSCULATI**



### New Stainless steel toggle fastener suitable for trunks and hatches

#### FULLY FLUSH OPEN AND CLOSE

Mirror-polished AISI 316 stainless steel lever closure, designed to fit various applications and ensure the closure of any hatch.

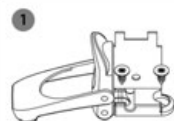
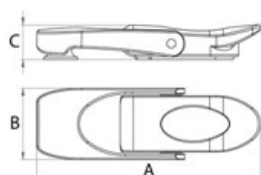
The locking pin with eccentric hole can be rotated to achieve the desired closing tension.

Once installed, the device has a flush design with ergonomic handle for easier use.

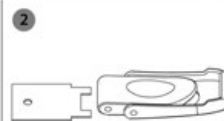
When open, the closing hook rotates at 180° and doesn't exceed the handle overall dimensions thus preventing to be hit by mistake.

It includes a PVC template for easier installation.

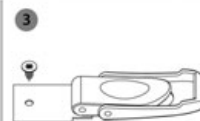
Code	mm			Screw size
	A	B	C	
38.213.00	80	26	13	M4
38.213.01	100	32	16	M5



Use the template to hold the base in the open position, and mount the body with two screws.



Insert the template on the front of the body.



Mark the hole for the latching pin.



Install the latching pin and turn it for the desired tension.