

GPS navigation charts

RAYMARINE Lighthouse Chart

Code 29.070.03

The new Raymarine LightHouse Charts brings a new level of clarity to marine GPS navigation. These flexible marine charts can be downloaded for Axiom and Element display via the RayConnect dedicated app.

When you buy the charts, you can download two regions.

The Premium version offers satellite images and points of interest such as service centres, dealers, workshops, services, main roads and restaurants.

The LightHouse Charts are also available with global coverage areas. See more on www.raymarine.it

Raymarine



Navionics maps

Navionics Platinum:

multi-dimensional Navionics mapping with 3D visualisation - satellite and aerial pictures - panoramic harbour pictures - harbour services and points of interest - dynamic tide icons

Navionics Gold:

exceptional detail - bathymetric lines - harbour plans - currents and tides - services - excellent coverage.

Navionics +:

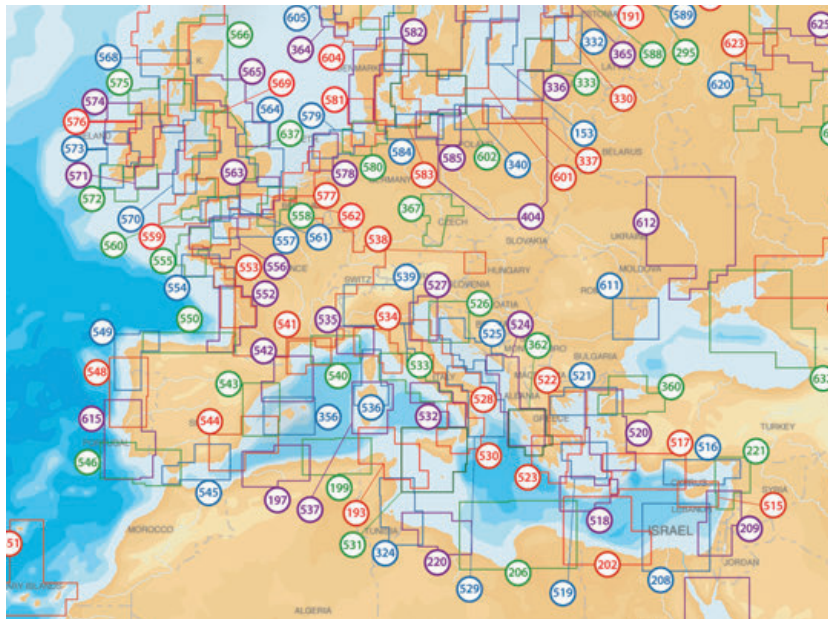
exceptional detail - bathymetric lines - SonarChart™ - Auto-routing - Plotter Sync - harbour plans - currents and tides - services - excellent coverage. Chose between 29.080.08 (Mediterranean Sea areas, Black Sea, Canary Islands and Azores) and 29.080.11 (empty). This latter can be downloaded by the final user with one of the XL9 Navionics + areas from navionics.com.

Navionics + Small:

exceptional detail - bathymetric lines - SonarChart™ - Auto-routing - Plotter Sync - harbour plans - currents and tides - services. SD/Micro SD card sold empty: the user can download the desired Italian or European areas among those indicated here below from navionics.com. It is also possible to download the Mediterranean Sea maps or the map of similar areas paying the difference on navionics.com.

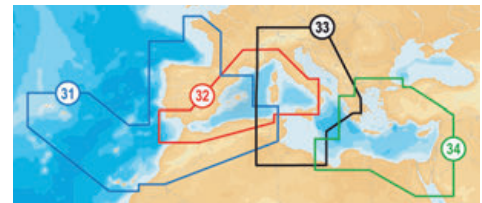
Code	Cartography model	Electronic Support	Size
29.080.09	Navionics + Blank Regular	SD / Micro SD	small
29.080.08	Navionics + 43XG	SD / Micro SD	XL9
29.080.11*	Navionics + empty	SD / Micro SD	XL9
29.080.35	Platinum +	SD / Micro SD	XL3

* Areas of interest XL9 NAVIONICS +: 1XG Us & Canada; 3XG Caribbean & South America; 20XG Greenland & Iceland; 28XG UK, Ireland & Holland; 30XG Africa & Middle East; 31XG Indian Ocean And South China Sea; 34XG Pacific; 35XG China Sea And Japan; 43XG Mediterranean & Black Sea; 44XG Baltic Sea; 45XG Skagerrak & Kattegat; 46XG Central & West Europe; 49XG Norway; 50XG Australia And New Zealand; 52XG Russia West

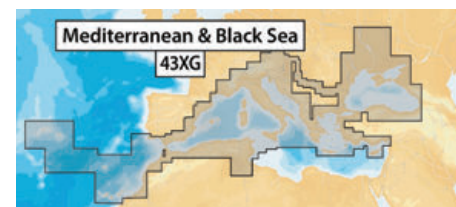


29.080.09 Europe Small

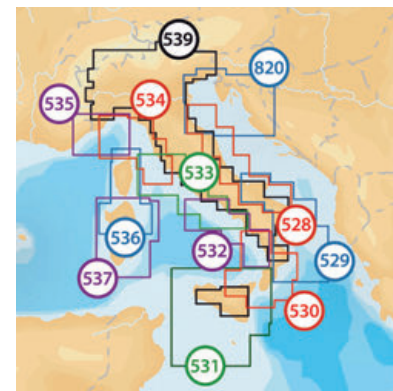
NAVIONICS
THE LEADER IN ELECTRONIC CHARTS



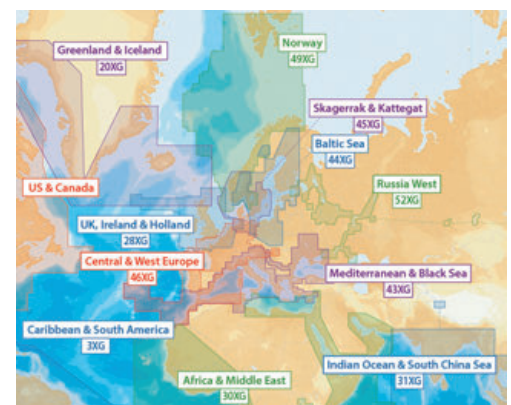
29.080.35 XL3



29.080.08 XL9 Navionics +



29.080.09 Italy Small



29.080.11 XL9 Navionics+

Navionics Updates

Code 29.080.10

It is the most convenient product devoted to continuously enhancing your old cartography and getting the most up-to-date Navionics+ (one-year update program included). This online upgrade service to Navionics+ is compatible with Navionics (Gold or Silver but not Platinum+) as well as cards from other brands such as C-MAP, Fishing Hot Spots, Garmin, LakeMaster, Lowrance, Magellan and TrakMaps.

To activate your new Navionics Updates card, simply connect it to your computer, click Downloads & Updates and verify eligibility using any compatible card from Navionics or other manufacturers. In about 15 minutes you will get the Navionics+ XL9 most updated charts and services. Navionics Updates can also be used to update Navionics+ cartography one year after purchase, once the standard chart update has expired.

