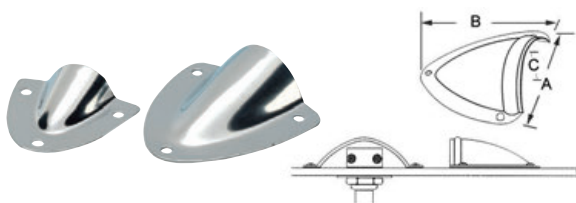


Scuppers and cockpit drains made of stainless steel and chromed brass



Protection tabs for skin fittings, petrol vents, water etc

Made of stainless steel.

Code	Ax BxC mm
17.213.60	41x44x12 h
17.213.70	57x54x16 h
17.213.75	93x87x25 h

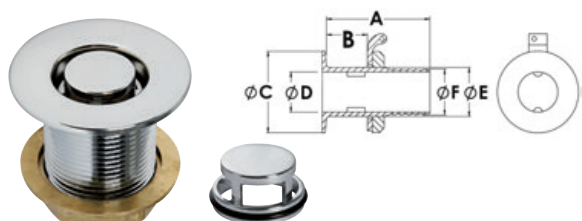


Cockpit drain

AISI 316

Made of **mirror-polished AISI316 stainless steel**. Snap upper grid for mounting and hiding the fastening screws.

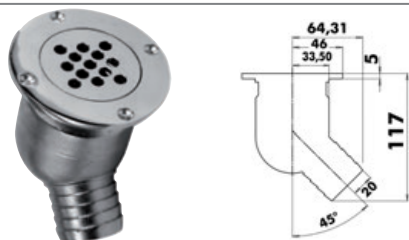
Code	A mm	BxC mm	E mm	D-Internal thread
17.118.49	58	50 x 38	5.3	1"
17.118.50	80	52 x 51	5.5	1" 1/2



Cockpit flush drain

Made of two **chromed brass** parts. Body and insert that works as a removable filter.

Code	Version	A mm	B mm	Ø C mm	Ø D mm	Ø E	Ø F mm
17.119.32	All thread	80	67	65	33	1" 1/4	-
17.119.33	All thread	80	67	70	39	1" 1/2	-
17.119.42	With hose connector	78	36	65	33	1" 1/4	38
17.119.43	With hose connector	75	33	70	39	1" 1/2	45



45° cockpit drain with check valve

AISI 316

Made of **AISI316 stainless steel**. Fitted with check system: an inner ball prevents any backflow. Removable grid for cleaning.

Code	Ø mm	Hoseholder in mm
17.118.01	92	40

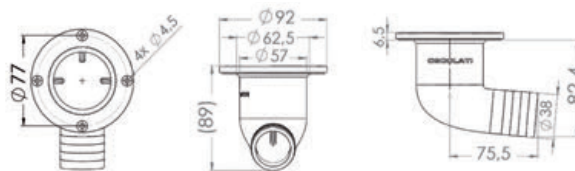


90° cockpit drain with check valve

AISI 316

316 stainless steel, fitted with check valve: an internal ball prevents backflows. Hidden screws.

Code	Ø mm	Hoseholder in mm
17.118.03	92	38

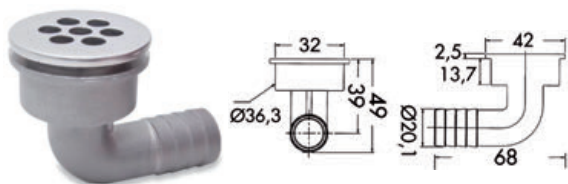
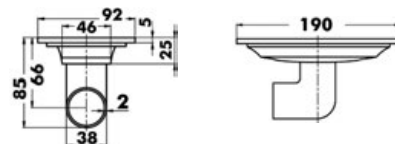


Oval cockpit drain

AISI 316

Made of **316 stainless steel**, fitted with removable grid.

Code	mm	Hoseholder in mm
17.118.05	92 x 190	38



Cockpit drain

AISI 316

Made of **AISI316 stainless steel**. The upper part is screwed thus allowing mounting on different gauges.

Code	Mounting hole mm	Hose adaptor mm	deck thickness mm	Head Ø mm
17.118.02	32	20	3/11	42