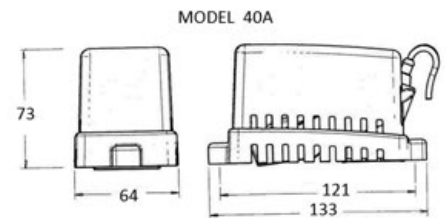
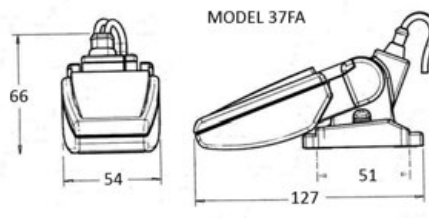
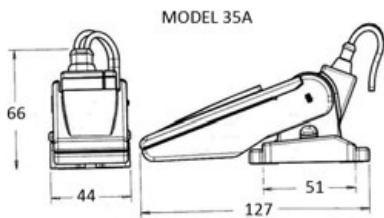


**RULE automatic switch for bilge pumps**

Mercury-free eco-friendly version. Removable base for easy servicing (MOD 35A / 37A). Tested to over 1,000,000 cycles.

Code	Version	Max current A	l mm	Included
16.601.00	35A	14	127x44x66 (h)	-
16.601.20	37FA	20	127x54x66 (h)	safety fuse
16.599.00	40A	20	133x64x73 (h)	-

**Automatic electronic switch for bilge pumps**

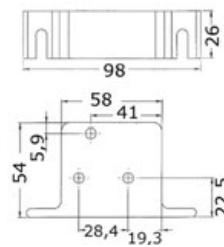
Fast installation in any point of the bilge. Petrol-, oil- and diesel-resistant.

Code	Version	V	Max A	l mm
16.609.00	Automatic	12/24	20	82x80x19h

**Automatic electronic switch for bilge pumps**

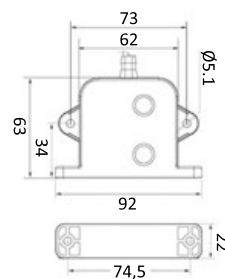
For any submersible pump operating at 20A max current draw and 12/24V. It works in fresh and salt water. It switches on at a 50-mm level and turns off at a 20-mm level. A 5-second return system prevents false starts. Oil- and hydrocarbon-resistant. RINA ISO 8846 type-approved.

Code	Level ON/OFF mm	V	Max A	l mm
16.610.00	50/20	12/24	20	86x54x26h

**New****Automatic electronic switch for bilge pumps**

Universal for all submersible pumps operating at 20A max current draw and 12/24 V. It switches ON at a 41-mm level and turns OFF at 9.5-mm level. A 3-second delay system prevents false starts. To be installed both horizontally and vertically.

Code	Level ON/OFF mm	V	Max A	l mm
16.610.01	41/9.5	12/24	20 (12V) / 10 (24V)	92x22x63h

**WHALE automatic electronic switch for bilge pumps**

- It uses the MIRUS patented field sensor technology that controls 12 or 24 volt DC bilge pumps up to 20 A current draw.
- No moving internal parts, no wear and no malfunctioning.
- Completely sealed, maintenance required.
- Solvent- and fuel-resistant polymer body.
- Mercury- and polluting-agent free.

Code	ON/OFF Level	Max V	Max A
16.548.90	32 mm	24	20

