

## Aluminium and brass rollers

**OSCULATI**

### Angled alloy fairlead

Made of **anodized aluminium**. Single roller bow fairlead. **Nylon** sheave.

Code	Length mm	Width mm	For ropes up to mm	For hulls up to m	kg
01.340.00	160	60	13	6.5	0.25



### Alloy fairlead with round base plate

Made of **anodized aluminium** by Osculati. Excellent finish. **Nylon** sheave.

Code	Length mm	Base mm	For ropes up to mm	kg
01.341.00	140	90x73	13	0.28



### Triple roller bow fairlead

Smooth-sliding interchangeable nylon sheaves. **Chromed brass** body.

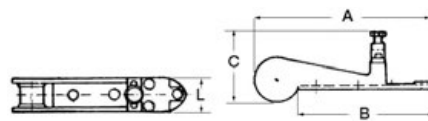
Code	Length mm	Width mm	Height mm	For boats	kg
01.345.00	107	100	73	6 to 10 m	1



### Light alloy bow roller with anchor locker kit up to 10 kg

Made of **anodized aluminium**, fitted with locker. Suitable for anchors Danforth, Bruce, Trefoil® or CQR. Polished finish. **Nylon** sheaves.

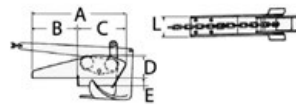
Code	A mm	B mm	C mm	L mm	For anchors up to max kg	kg
01.347.10	340	242	160	75	10	2



### Alloy hinged bow roller up to 12 kg

Made of **anodized polished aluminium**. Suitable for anchors Danforth, Bruce, Trefoil®, CQR and Delta. **Nylon** sheave.

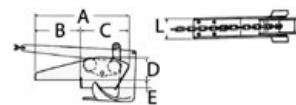
Code	A mm	B mm	C mm	D mm	E mm	L mm	For anchors up to max kg	kg
01.335.10	365	205	160	60	13	88	12	2.6



### Alloy hinged bow roller up to 15 kg

Made of **anodized aluminium**, wide overhang to prevent the anchor from touching the bow. Suitable for anchors Danforth, CQR, Trefoil®, Bruce, Delta etc. **Nylon** sheave.

Code	A mm	B mm	C mm	D mm	E mm	L mm	For anchors up to max kg	kg
01.336.10	410	160	250	62	25	95	15	3.7



### Bruce and Trefoil® anchor roller

Made of **anodized polished aluminium**, it makes the most of the Bruce and Trefoil® anchors' shape to provide self-locking features. When the anchor is raised it is firmly fitted into the roller to avoid manual locking interventions. **Nylon** sheave.

Code	A mm	B mm	C mm	L mm	For anchors	kg
01.343.10	380	261	196	67	Bruce, Trefoil® kg 5/7.5/10	2.4

