

Trim tabs



AutoTrim Tabs

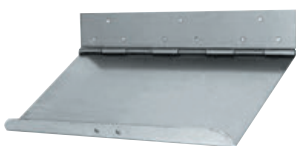
Made of crosslinked **polyethylene**, self adjusting. Special shape and ribbing, initially helps the hull to plane, increases, it aligns with the hull as speed increases, ensuring perfect attitude and stability; easy universal installation.

Code	mm	For boats
51.640.00	255x210	up to 6 m
51.650.00	380x260	up to 6/8 m



Standard series trim tabs, depth of 230 mm

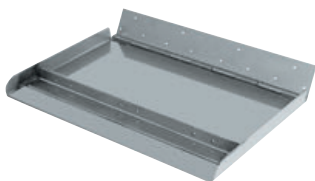
Made of **stainless steel**, model fitted with **2.5 mm thickness and special swivelling hinge**; the tab can rotate 180° without forcing or breaking the transom bracket. Designed to be mounted: with **electro-hydraulic kit** Bennett 51.235.12/24; with **electro-mechanic kit** EM 52.350.00 (only standard series 51.134.01/02/03/04/05); with **mechanic kit** 51.134.00 (standard series 51.134.01/2/3/4 only).



Code	Flap pair cm	For boats	Preset for hydraulic		
			hydraulics 51.235.12/24	Actuators 51.350.00	actuators 51.134.00
51.134.01	30x23	4/4.5	x	x	x
51.134.02	40x23	4.5/5	x	x	x
51.134.03	55x23	Up to 5/6 m	x	x	x
51.134.04	75x23	6.5/7.5	x	x	x

Pair of Maxi series trim tabs, 300-mm depth, fitted with side and central rib.

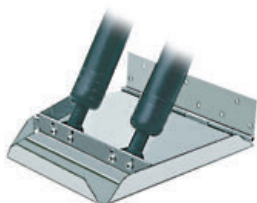
Made of **stainless steel**, model fitted with **2.5 mm thickness and special swivelling hinge**; the tab can rotate 180° without forcing or breaking the transom bracket. Designed to be mounted: with **electro-hydraulic kit** Bennett 51.235.12/24; with **electro-mechanic kit** EM 52.350.00 (only standard series 51.134.01/02/03/04).



Code	Flap pair cm	For boats	Preset for hydraulic	
			hydraulics 51.235.12/24	Actuators 51.350.00
51.434.02	45x30	up to 6/7 m	x	x
51.434.03	55x30	up to 8/9 m	x	x
51.434.04	75x30	up to 9/10 m	x	x

Pair of HS series trim tabs suitable for hulls over 40-knot speed

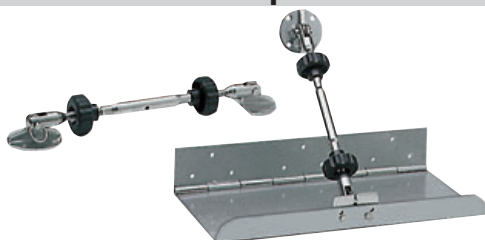
Made of **stainless steel** exclusively by Osculati, model fitted with **2.5 mm thickness and special swivelling hinge**; the tab can rotate 180° without forcing or breaking the transom bracket. Designed to be used: with **electro-hydraulic kit** Bennett 51.235.12/24; with **electro-mechanic kit** EM 52.350.00 (only standard series 51.134.01).



Code	Flap pair cm	To match/order with
51.234.01	30x30	kit EM 51.350.00 - kit Bennett 51.235.12/24
51.234.02*	30x45	kit 51.235.12/24 + two cylinders separately 51.237.00 + un kit 51.240.00

* To be used with a double cylinder Bennet.

Trim tab actuators/pistons and accessories



Mechanical kit to operate Trim Tabs

Made of two 10-mm **stainless steel** turnbuckles, fitted with four **stainless steel** plates for mounting turnbuckles into the flaps and the hull, **four special cranks** to quickly lock and unlock turnbuckles **by hand**.

Code	For twin tabs
51.134.00	51.134.01; 51.134.02; 51.134.03; 51.134.04