

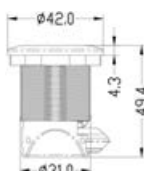
OSCULATI



Push-button click

Made of chromed zamak, fitted with nylon stop. When the knob is inserted aligned, the safety catch is connected and the hatch cannot be opened. Press the knob to push it out and release the safety catch.

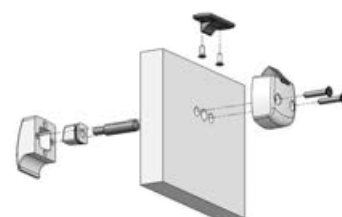
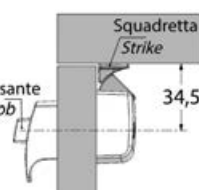
Code	Neck Ø mm	Outer Ø mm
38.179.00	31x25	42



Brass switch with lock

Made of chrome brass. For 13/16/19/23-mm thickness.

Code	mm
38.193.00	30x40x21.5

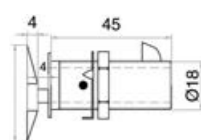


Flush Lock

Universal lock almost flush with the panel. Suitable even for heavy drawers and doors since it offers a very good grip. Made of stainless steel + chromed brass. MAGNETIC version for soft close drawers.

RETAIL (1 pc)	BULK (20 pcs)	Panel thickness mm	Finish	Version	Knob mm	Stop	Type
38.179.40	38.179.40BU New	4 - 27	Polished S.S.	Oval	36x25	Yes	A
38.179.41	38.179.41BU New	4 - 27	Polished S.S.	Square	35x35	Yes	A
38.179.45*	-	4 - 27	Polished S.S.	Oval	36x25	Yes	A (magnetic)
38.179.50	-	4 - 26	Polished S.S.	Oval	35x27	Yes	B
38.179.51	-	4 - 26	Polished S.S.	Rectangular	36x24	Yes	B

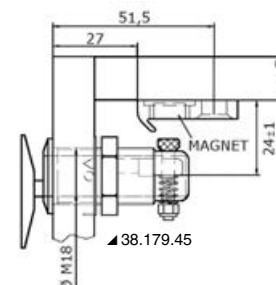
* MAGNETIC version for soft close guide drawers.



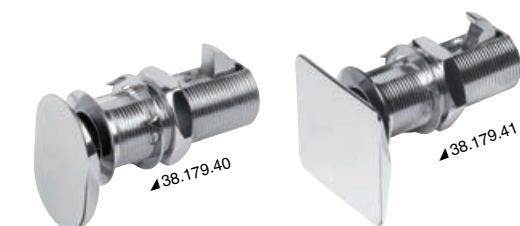
▲ 38.179.40/41 (Type A)



▲ 38.179.50/51 (Type B)

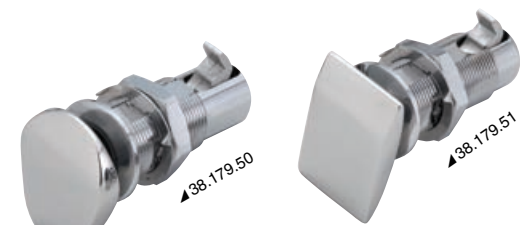


▲ 38.179.45



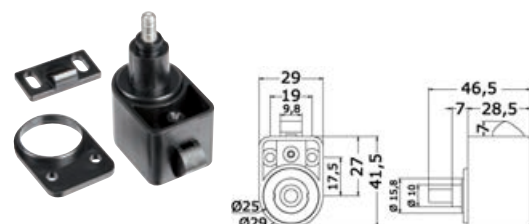
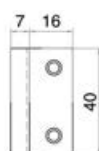
▲ 38.179.40

▲ 38.179.41



▲ 38.179.50

▲ 38.179.51



SELF-LATCHING pushbutton spring lock

This pushbutton spring lock allows to close the hatch by **simply pushing it**. Nylon frame with stainless steel springs. Opening by pressing the knob.

Code	Version	For hatches mm	Knob optional
38.182.54	automatic lock	16/22	38.182.55; 38.182.60; 38.182.68; 38.182.70; 38.182.78; 38.182.80; 38.182.88