

TREADMASTER



TREADMASTER M-Original

Traditional flooring for **decks**, cockpits and ladders.

Anti-slip flooring for decks and cockpits, made in the UK from rubber-cork conglomerate.

Code	Color	Thickness mm	Sheet size mm	Surface
65.905.01	sand white	3	1200x900	diamond
65.905.02	medium grey	3	1200x900	diamond
65.905.03	medium blue	3	1200x900	diamond
65.905.04	brown	3	1200x900	diamond
65.905.05	light blue	3	1200x900	diamond
65.905.06	light grey	3	1200x900	diamond



▲ 65.905.01



▲ 65.905.02



▲ 65.905.03



▲ 65.905.04



▲ 65.905.05



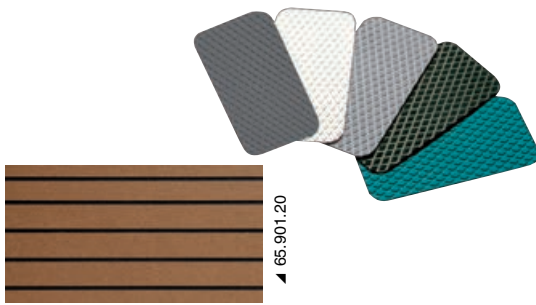
▲ 65.905.06

TREADMASTER M-Original DP self-adhesive plates

Self-adhesive plates in 2-pc display packaging.

Anti-slip flooring for decks and cockpits, made in the UK from rubber-cork conglomerate.

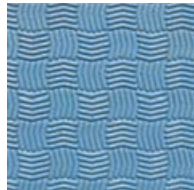
Colour	275x135 mm	412x203 mm
Sand white	65.901.02	65.901.12
Medium blue	65.901.01	65.901.10
Grey	-	65.901.16
Light grey	65.901.05	65.901.15
Black	65.901.08	65.901.18
- Black-edged teak	-	65.901.20



▲ 65.901.20



▲ 65.906.02



▲ 65.906.03

TREADMASTER Sp Classic

Cockpit flooring, sundeck and ladder steps.

Anti-slip flooring for decks and cockpits, made in the UK from rubber-cork conglomerate.

Code	Colour	Thickness mm	Sheet mm	Surface
65.906.02	Grey	2	1200x900	Anti-skid knurling
65.906.03	Medium blue	2	1200x900	Anti-skid knurling

TREADMASTER Engine Room

Anti-skid waterproof flooring ideal for engine rooms. Resistant to mineral oils.

Anti-slip flooring for decks and cockpits, made in the UK from rubber-cork conglomerate.

Code	Color	Thickness mm	Sheet size mm
65.899.00	Black	3	1200x900

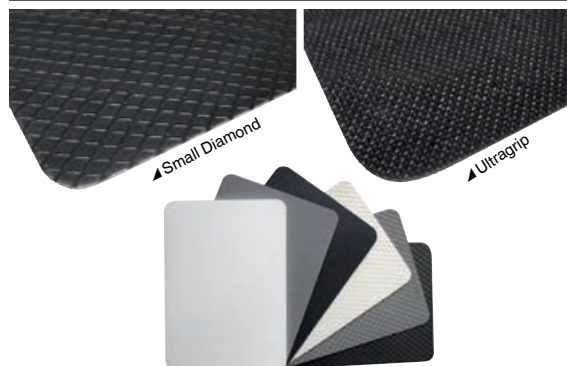
TREADMASTER M-Tec

New deck flooring. Thinner for better adaptability, high anti-slip properties.

Two finishes available: Small Diamond and Ultragrip.

Anti-slip flooring for decks and cockpits, made in the UK from rubber-cork conglomerate.

Code	Colour	Thickness mm	Plates size mm	Surface
65.902.06	Light grey	2.5	1200x900	Small Diamond
65.902.08	Black	2.5	1200x900	Small Diamond
65.902.16	Light grey	1.8	1200x900	Ultragrip
65.902.18	Black	1.8	1200x900	Ultragrip



▲ Small Diamond

▲ Ultragrip



OSCULATI

Adeprene 465 special glue, Treadmaster-dedicated

One-component formula. Suitable for all Treadmaster products and similar. It can be applied on fiberglass, wood, steel and aluminium.

Code	Package g	Yield m ²
65.907.01	850	2,80