



### Sound-deadening quilt, heat-insulation up to 700°

Reaction to fire DIN 4102. **Pleated glass fibre felt** mattress type "E". It is paired, through diamond quilting, into two glass textiles of 400 g, one of which is in aluminum. **Stylish design**, it is resistant to elevated mechanical strain. Particularly indicated as thermo acoustic isolator.

Code	Thickness mm	Roll
65.093.00	10	1 m x 10 m



\* It perfectly fits the walls of engine rooms, it can be glued or fixed with washers 65.098.00. Price by the roll.



65.098.00 OPTIONAL washers

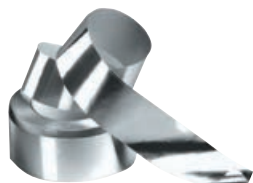


### VETROTEX fibreglass mat

**Sound-deadening, noise-insulating**, fitted with aluminized fibreglass on the external side. Used as **anti-heat** covering on exhaust pipes, heat exchangers and on any piping needing to be insulated. Price by the single roll.

Code	Fireproof	Thickness mm	Roll
65.096.00	class 1	10	20 x 500 cm

### Adhesive aluminium tape roll



Designed to finish sound-deadening noise-insulating panels 65.094.00 after they are modelled and mounted

Code	Roll m	Height mm
65.095.00	50	50

### Self-extinguishing glue for sound-insulating/sound-deadening panels



Sound-insulating glue that optimizes the performance of the panels it is applied to.

Code	Packaging	Homologated	Yield gr/mq
65.100.02	0.750 l	Ri.N.A.	350/400



### ADEBOND professional cianoacrylic bonding

It sticks immediately metal, plastic, rubber, wood, leather, artificial leather, etc... Dispenser package.

Code	
65.236.21	50

## Lubricants and DURALAC



### DURALAC

Insulating/sealant plastic helps prevent electrolytic corrosion on jointing points between two different metals such as: aluminium fixed onto stainless steel screws, aluminium windlasses or brass fixed with stainless steel bolts, stainless steel accessories for mast fixed onto the mast itself (made of aluminium) with rivets or screws, cleats secured with different metal studs. Duralac is a yellow plastic based with barium chromate, flexible and resistant, to be fitted in between two metals that are jointed together; application with brush; do not dilute

Code	Package
65.750.00	250

### CIBA marine glue



Made with phenolic resins, dark red colour, fitted with powder catalyst. It's the most powerful glue in the world, used to glue wood, resin, polyester, metals, etc.

Code	Package g	Type-approval
65.225.11	500	RINA

### Plastic toothed washers



For fixing sound-deadening panels onto ceilings or bulkheads. Screws not included.

Code	Ø mm	Hole mm	Package
65.098.00	50	3	250 pcs.
65.098.40	50	3	40 pcs (blister)